



BUNDAROO ST

WITH A RICH PALETTE OF MATERIALS, EXQUISITE INTERIOR STYLING AND THE MOST ENERGY EFFICIENT PRODUCTS ON THE MARKET.

A heritage listed house within the Bowral conservation area that used to be a B&B is nestled behind a rhododendron tree. An extension to the back of the cottage, that cannot be seen from the front of the home, has an industrial chic feel which makes for a superb contrast to the original front section of the home.

Architect Tina Tziallas of Tziallas Omeara Architecture Studio said, 'We had to marry contemporary design, thermal performance, heritage and a very complex build on quite a restrained site'. This made Bundaroo a very dynamic project, where Tina worked closely with the client, the builder and AWS window fabricator, Hanlon Windows.

Hanlon Windows were involved from the design stage. The brief was for large windows and doors including an extensive amount of glazing for maximum natural light.

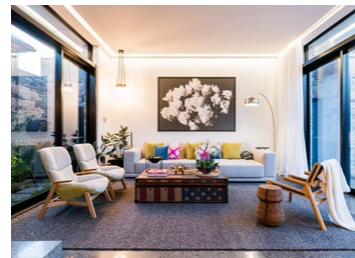
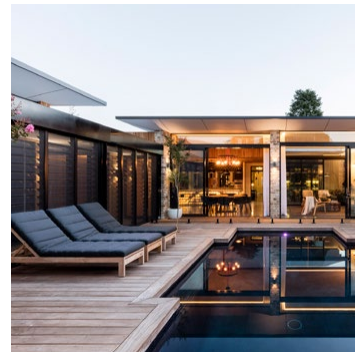
Being located in the Southern Highlands where a cooler climate is certain each year, the AWS ThermalHEART™ product was specified.

An impressive louvre gallery was envisaged as an indoor/outdoor space that visually connects the guest wing to the rest of the house and cross ventilation was key. At certain times of the day, the louvres create amazing shadows along the polished concrete floor; an artwork that is constantly changing as the day unfolds.

The Elevate Aluminium commercial range of windows and doors incorporates strong bold frames and heavy duty commercial grade rollers, hinges and hardware, ensuring the smooth operation and long term durability of the systems. Commercial frame profiles allow for wider windows and doors, a perfect solution for this project where maximising views was a priority. With At At either end of the louvre gallery are external thermally broken doors. This ensured that at those times of the year when it's cold, performance of the louvered space does not impact on the performance of the rest of the home.

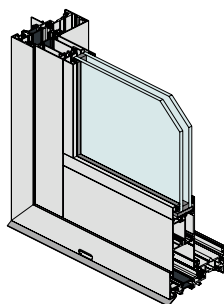
With an array of modern fixtures, a great feature of the home is the heating system in place, a geothermal system. A geothermal heat pump extracts heat from the ground which is then put to use for the heated floor, the swimming pool and the hot water system. This design idea supports the reason why ThermalHEART™ was chosen for this energy efficient home.

Bundaroo is an apt example of a successful, contemporary, sustainable home in the Southern Highlands which is changing the design world in regional Australia.



For more information and the full gallery, visit:
www.thermalheart.com.au

Architect: Tina Tziallas – Tziallas Omeara Architecture Studio. Builder: AJ Corby Constructions. Photography: Tom Ferguson



■ SERIES 731 THERMALLY BROKEN SLIDING DOOR

- × Series 731 sliding door incorporates ThermalHEART™ technology giving a true wide thermal break between the outside and inside faces.
- × A major advantage with ThermalHEART™ in cold climates is the reduction in internal condensation. This saves potential damage to timber reveals and floor finishes.
- × ThermalHEART™ is also suitable for hot climates – ThermalHEART™ windows and doors will help to reduce the cooling load on airconditioning units in hot climates.
- × The extra strong door stiles in the sliding doors allow oversize door panels to be fabricated.
- × These sliding doors will accept Centor™ SI screen.
- × Low air infiltration makes these sliding doors suitable for air-conditioned buildings.
- × These sliding doors have been tested for compliance with the relevant Australian Standards and achieved a high water resistance of 300Pa, making the product suitable for most residential applications.



Hanlon Windows are one of 150 licensed manufacturers of Vantage and Elevate™ around Australia. The business prides itself on its skill and experience in balancing client requirements and ensuring the best possible glazing outcome for each individual project. With a supply and install team Hanlon Windows Australia can manage the selection, supply and install of Australia's leading window and door systems into your project.

